

photographing your artwork



photographing your artwork



photographing your work



Any photo
of your work
is better than
no photo
of your work.

photographing your artwork

getting organized

preparing selected work



getting organized
preparing selected work
is it clean? wrinkle free?



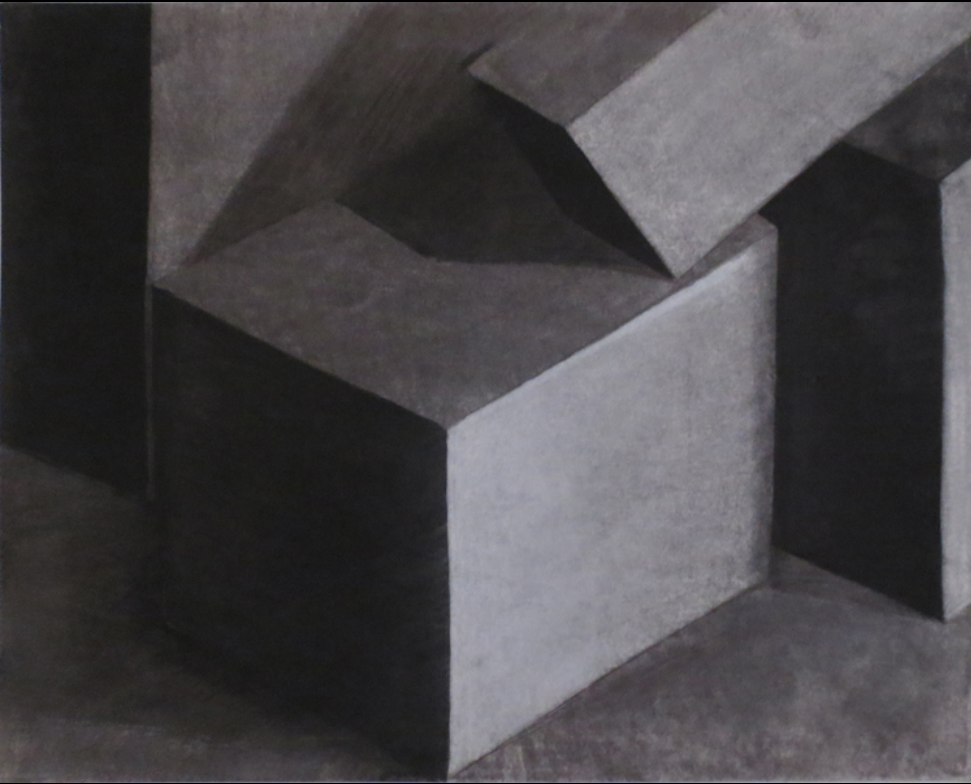
getting organized
preparing selected work
is it clean? wrinkle free?



getting organized
preparing selected work
is it clean? wrinkle free?



getting organized
preparing selected work
is it clean? wrinkle free?



getting organized

preparing selected work

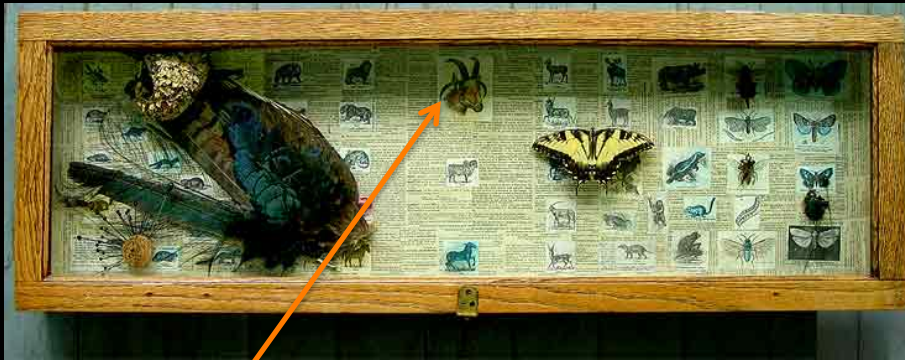
is it clean? wrinkle free?

if it's not, FIX IT!

make new work

trim edges

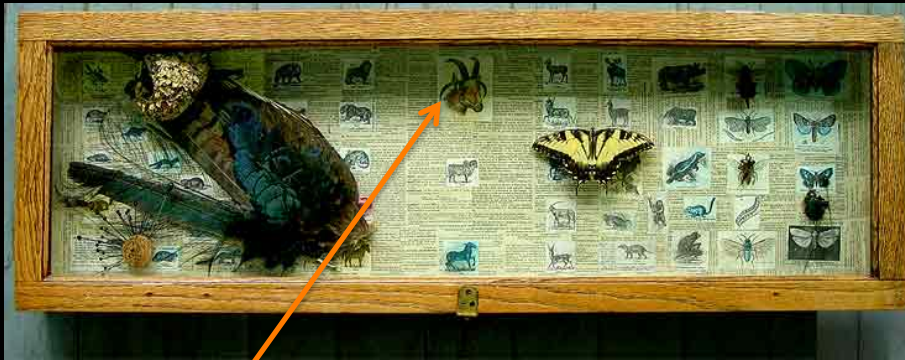
erase fingerprints



Alex Troup

getting organized
preparing selected work
is it clean? wrinkle free?
is it framed or matted?

protrusions may create shadows



Alex Troup

getting organized
preparing selected work
is it clean? wrinkle free?
is it framed or matted?

protrusions may create shadows... can you unframe it?



getting organized

preparing selected work

is it clean? wrinkle free?

is it framed or matted?

glass is not clear



getting organized
preparing selected work
is it clean? wrinkle free?
is it framed or matted?
glass is not clear

the best way to photograph art behind glass
is to take off the glass

photographing your artwork

getting organized

preparing selected work

photographic environment

photographic environment
as empty as possible



photographic environment
as empty as possible

2-D work:

clean, flat wall

Attach the work as flatly as possible
to the wall

Whatever you use to attach the work
to the wall should be unobtrusive



photographic environment
as empty as possible

3-D work:

Consider your background and
perspective

Install a sweep back drop from a
long piece of paper or cloth



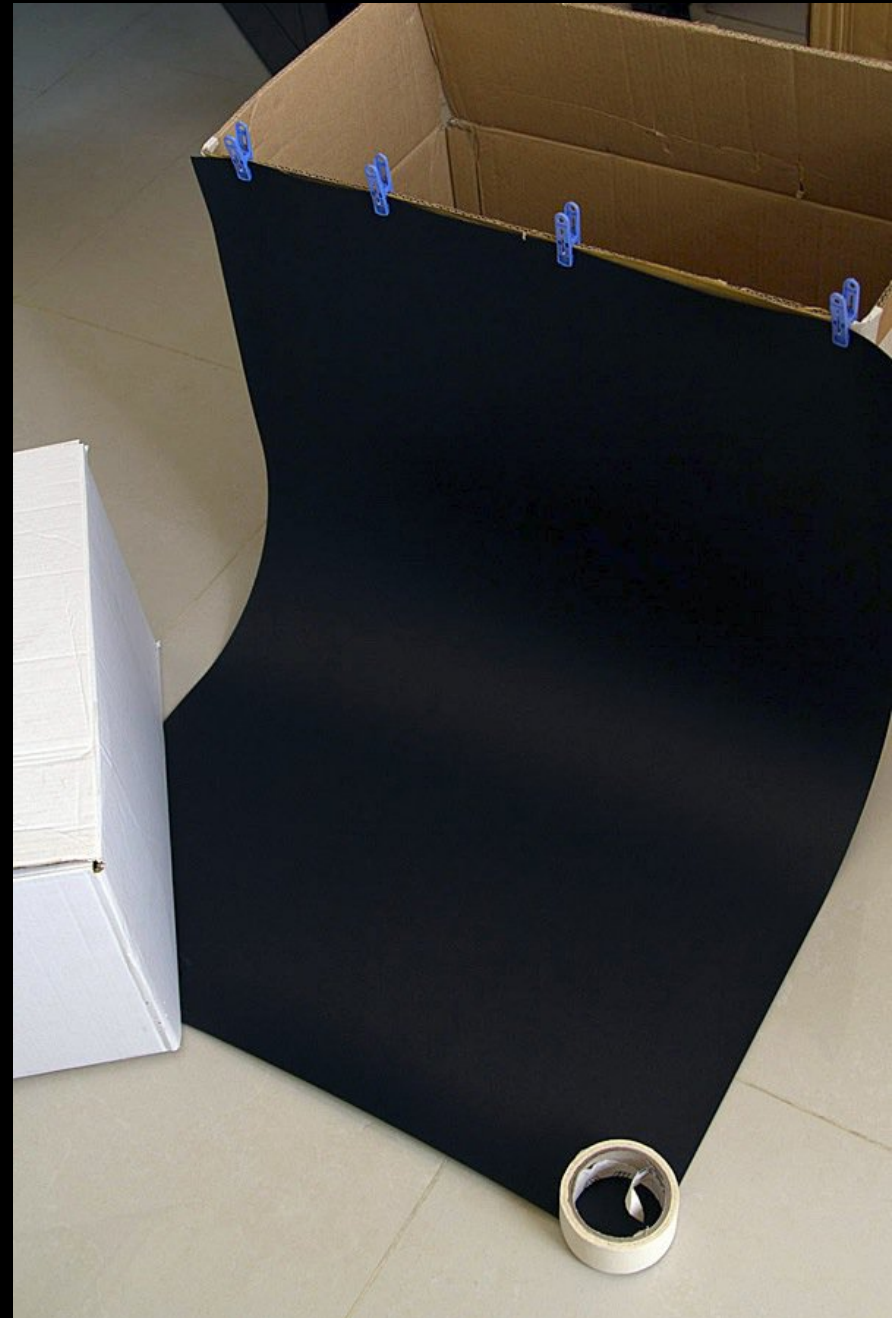
photographic environment
as empty as possible

3-D work:

Consider your background and
perspective

Install a sweep back drop from a
long piece of paper or cloth

Choose neutral back drop color
most appropriate for your object



photographing your artwork

getting organized

preparing selected work

photographic environment

basic equipment

basic equipment

camera

tripod

lighting



basic equipment

camera

tripod

lighting



basic equipment
camera
tripod
lighting

Photography =
"writing with light"



basic equipment
camera
tripod
lighting

This setup = \$90 on Amazon,
Sept 2017



basic equipment
camera
tripod
lighting

sunlight =
diffused, even light



basic equipment
camera
tripod
lighting

sunlight =
diffused, even light

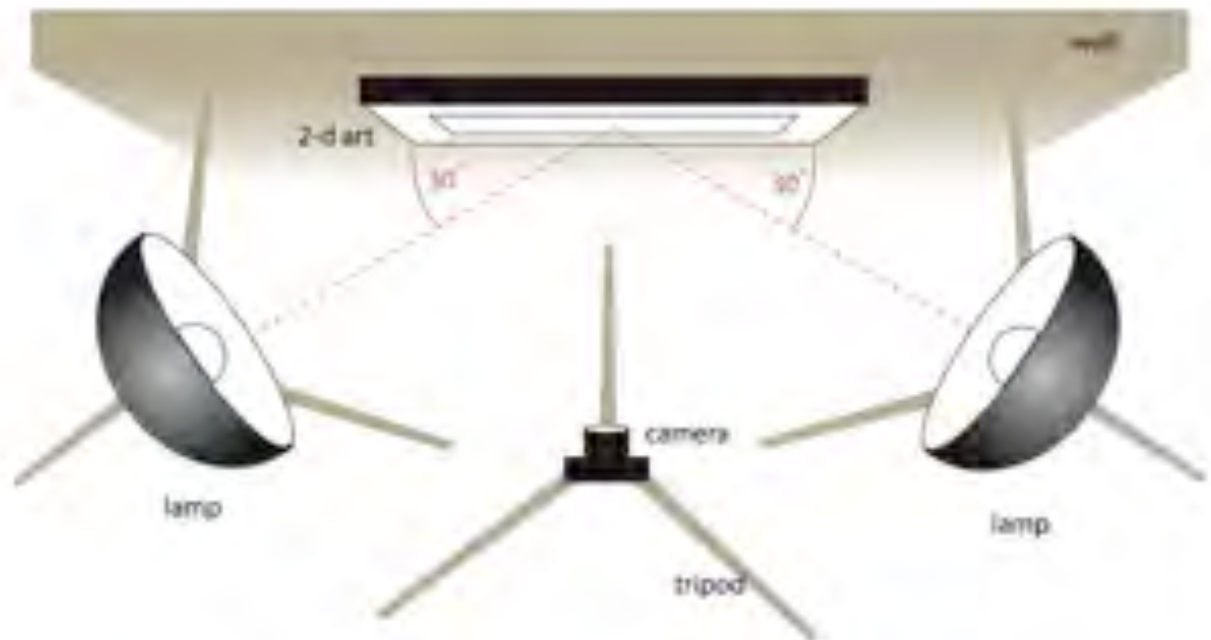


basic equipment
camera
tripod
lighting

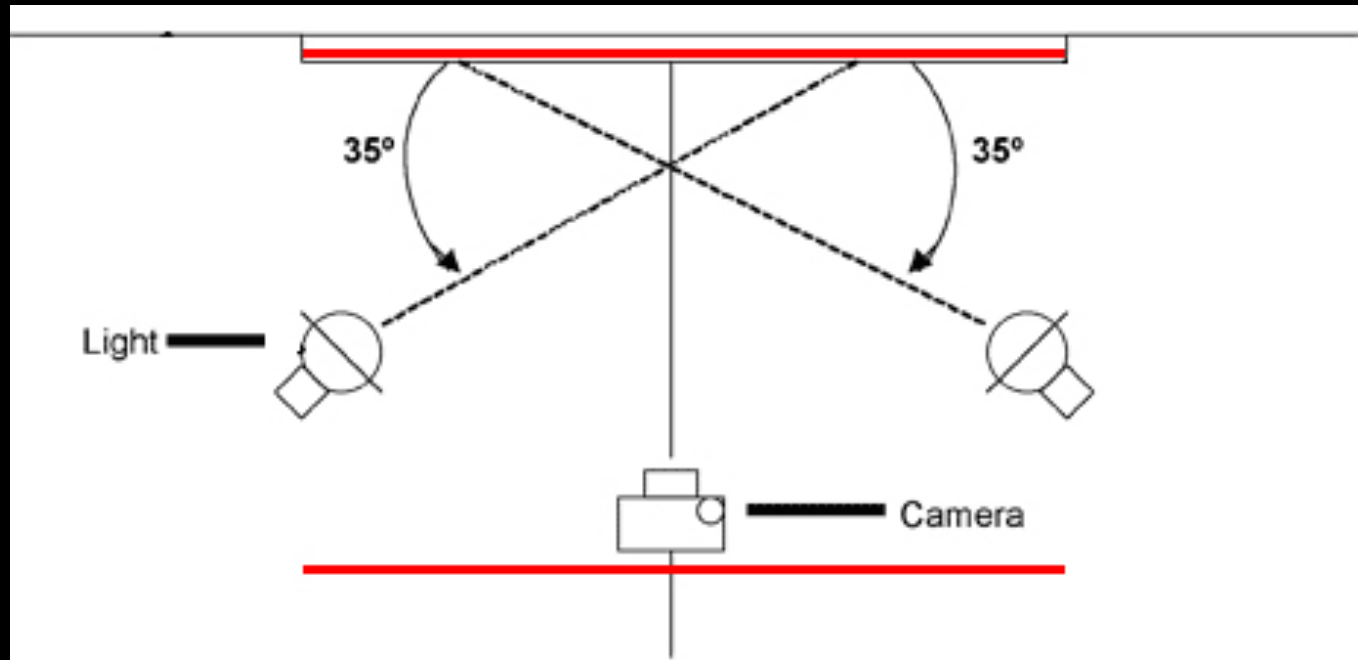
sunlight =
diffused, even light



basic equipment
camera
tripod
lighting



basic equipment
camera
tripod
lighting



photographing your work

- getting organized

 - preparing selected work

 - photographic environment

 - basic equipment

taking the shot

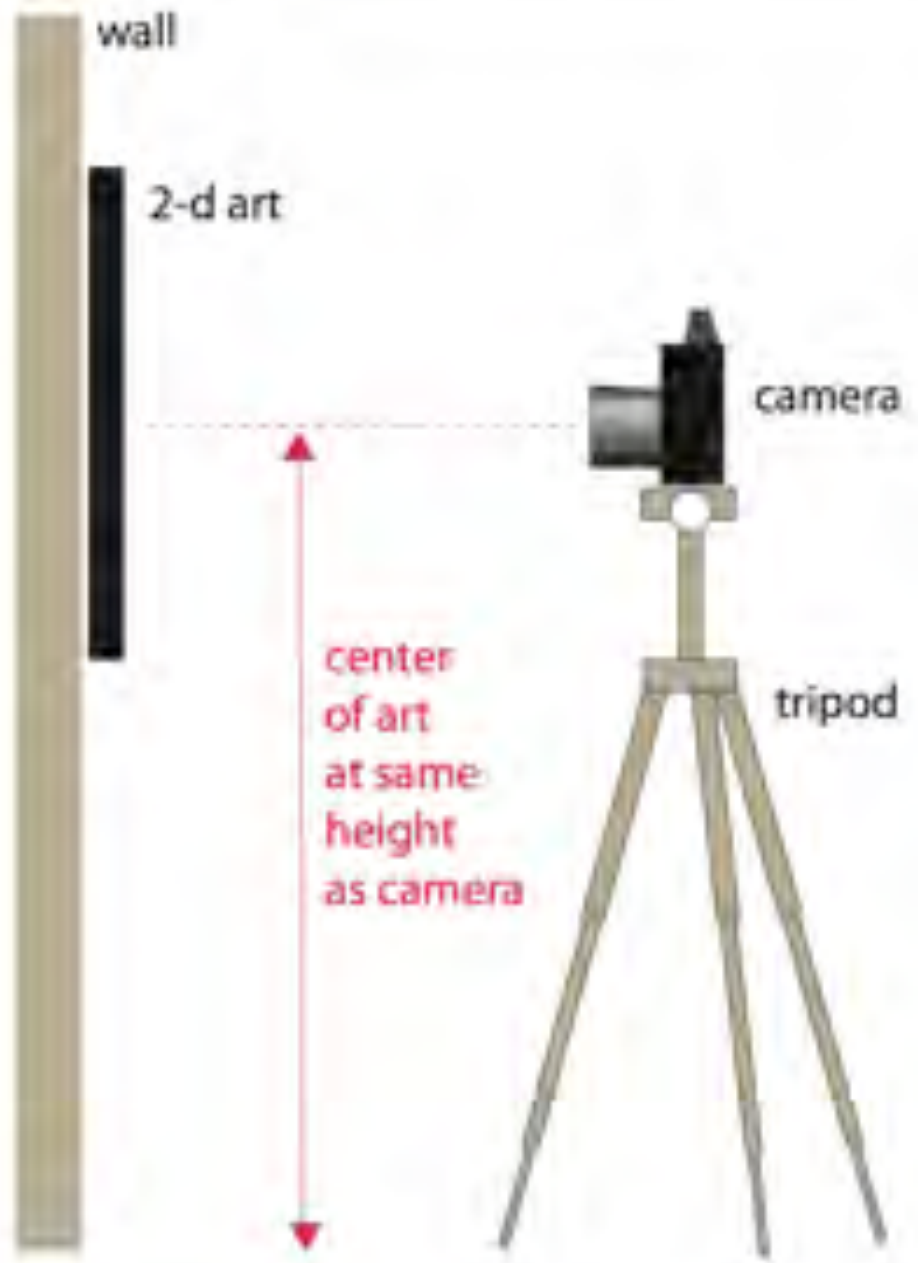
- camera tips

- editing the shot

taking the shot

2D work:
to avoid distortions in the
image when photographing
2D work, the center of the
lens must be centered in
relation to the work

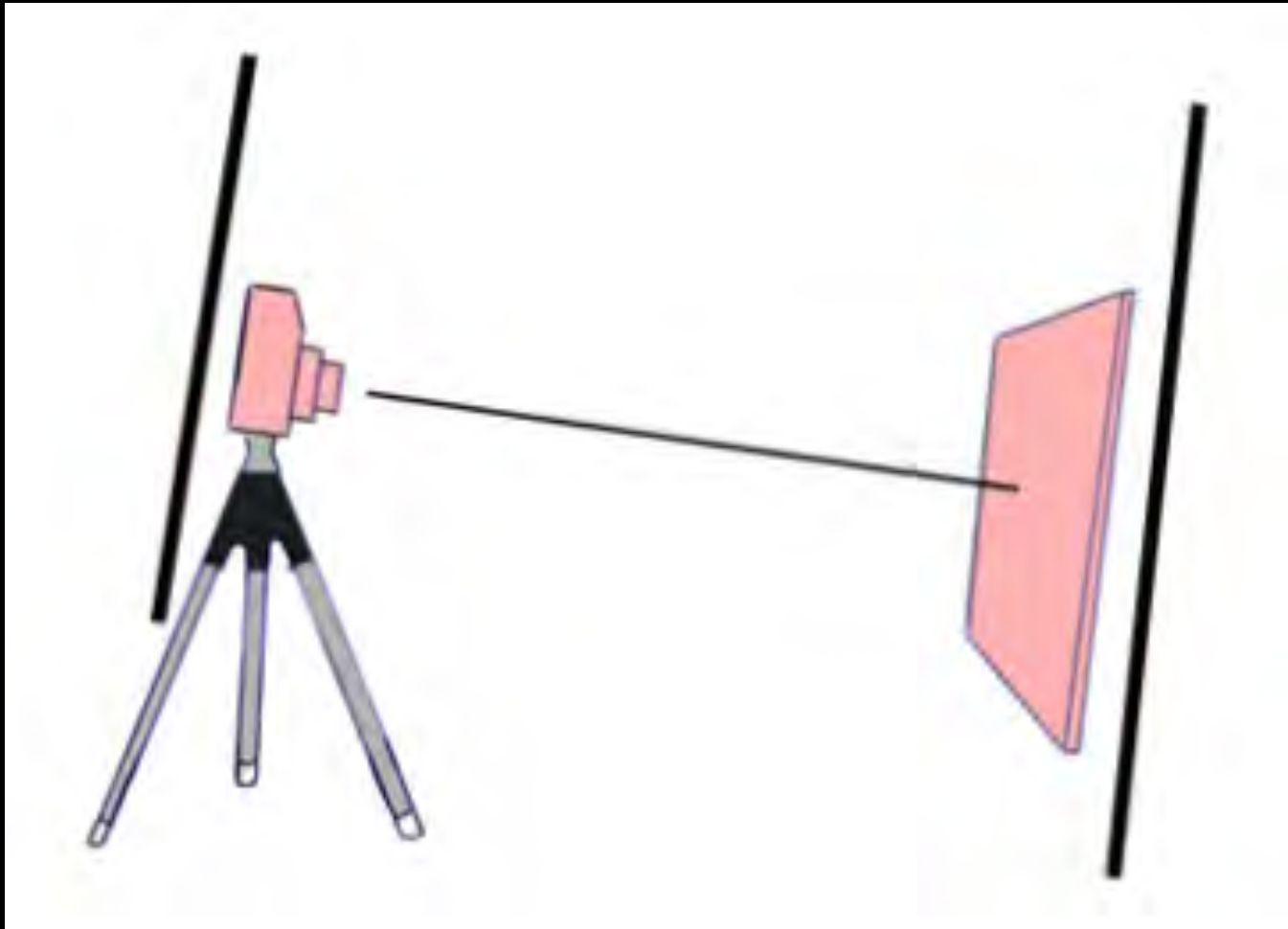
the back of the camera must
be parallel with the picture
plane



taking the shot

2D work:
to avoid distortions in the
image when photographing
2D work, the center of the
lens must be centered in
relation to the work

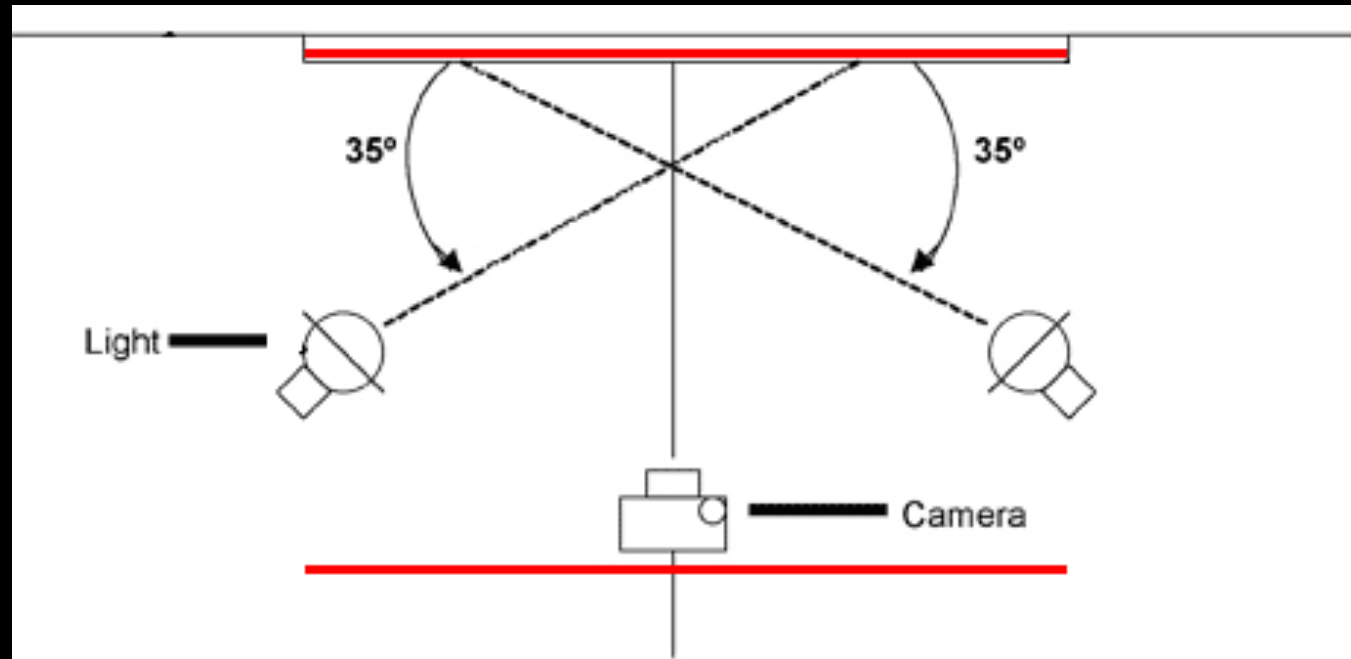
the back of the camera must
be parallel with the picture
plane



taking the shot

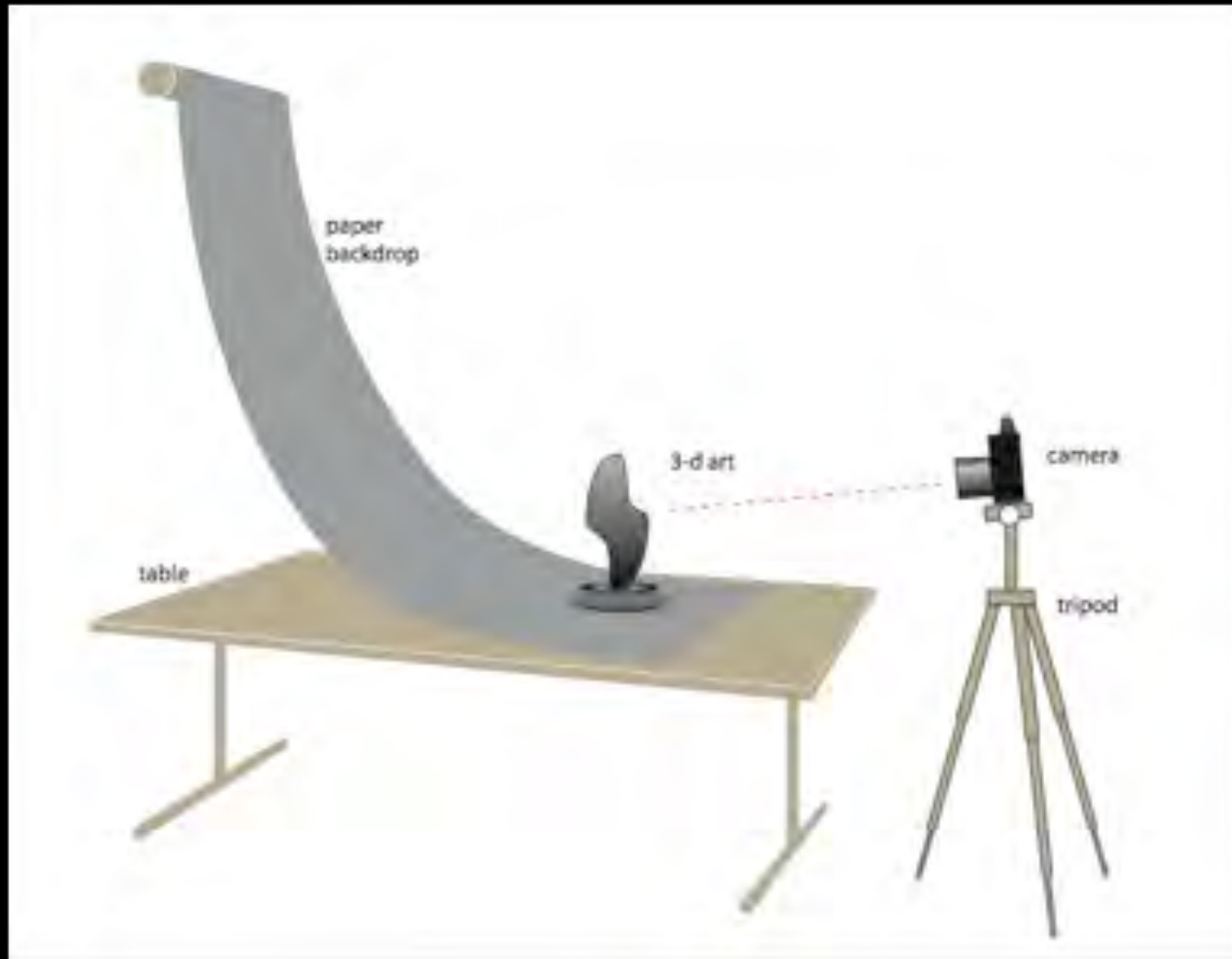
2D work:
to avoid distortions in the
image when photographing
2D work, the center of the
lens must be centered in
relation to the work

the back of the camera must
be parallel with the picture
plane



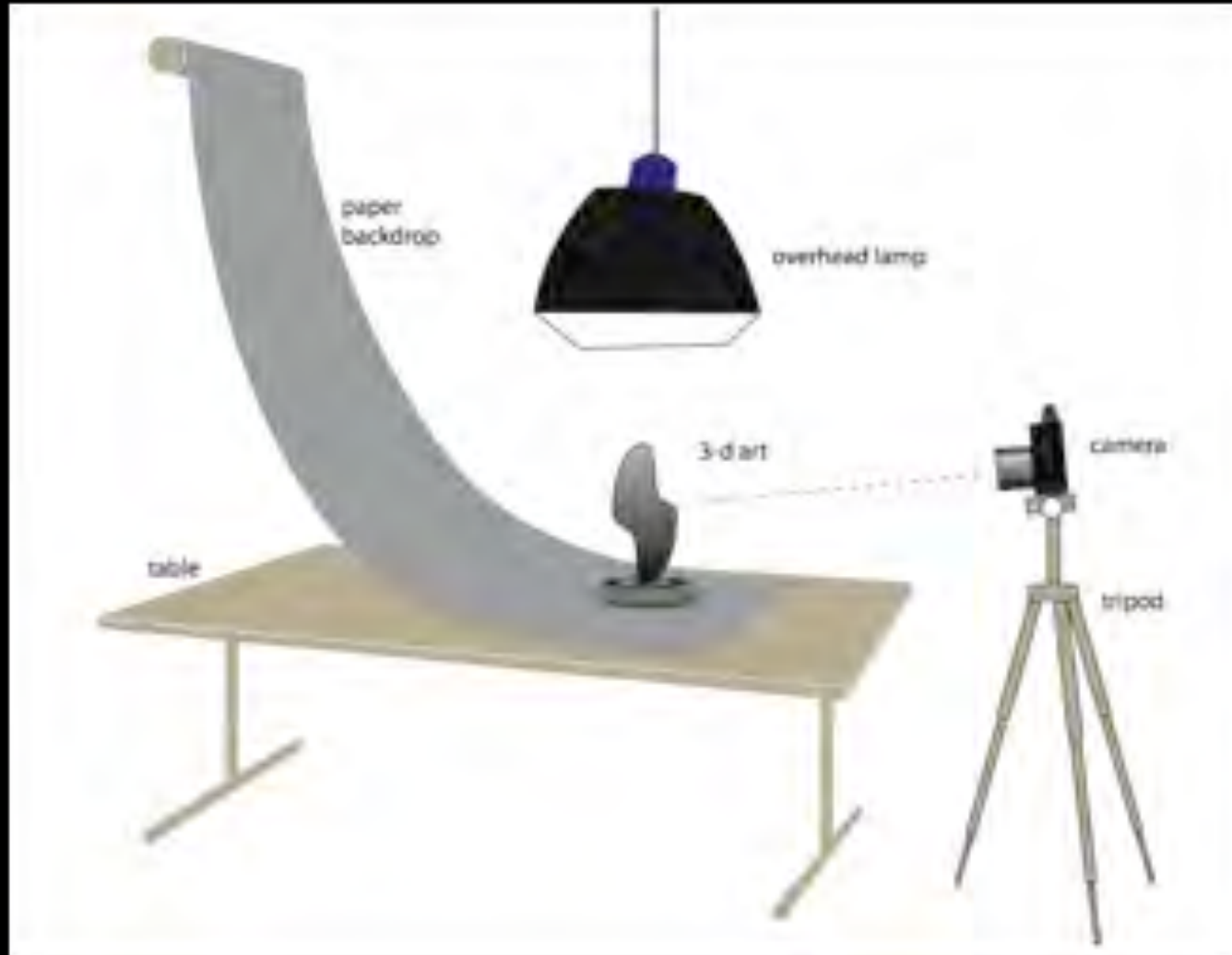
taking the shot

3-D work:
set your camera on its
tripod and adjust the
height so it is at a low-
enough angle to permit a
direct view to the front,
sides, and back of the work



taking the shot

3-D work:
Different lighting setups
are possible – experiment
to find one that best
allows viewers to view the
work



taking the shot

3-D work:
Different lighting setups
are possible – experiment
to find one that best
allows viewers to view the
work



photographing your artwork

getting organized

preparing selected work

photographic environment

basic equipment

taking the shot

camera tips

work must be in
focus



work must be in
focus

background behind
work should be as
neutral as possible



work must be in
focus

background behind
work should be as
neutral as possible

shoot 3D work from
different viewpoints



Kathy Boortz, Starry Night Peacock

work must be in
focus

background behind
work should be as
neutral as possible

shoot 3D work from
different viewpoints



Kathy Boortz, Starry Night Peacock

work must be in
focus

background behind
work should be as
neutral as possible

shoot 3D work from
different viewpoints

include shadows in
photos of 3D work



photographing your artwork

getting organized

preparing selected work

photographic environment

basic equipment

taking the shot

camera tips

editing

Photoshop:
powerful
complex
expensive

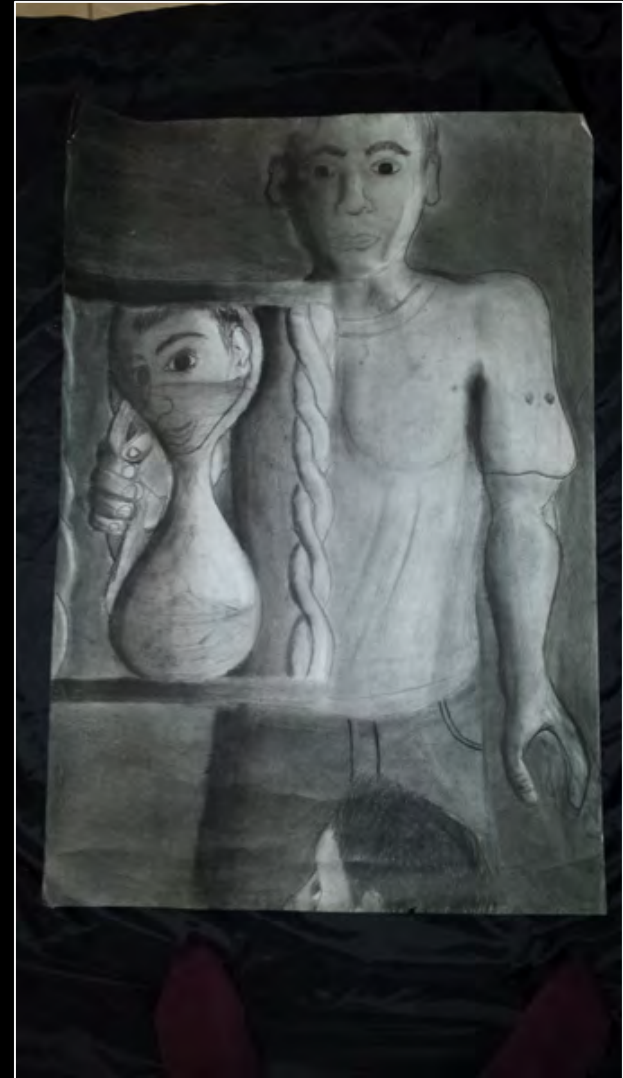
free software:
often adequate
relatively simple
free



Nancy Cole

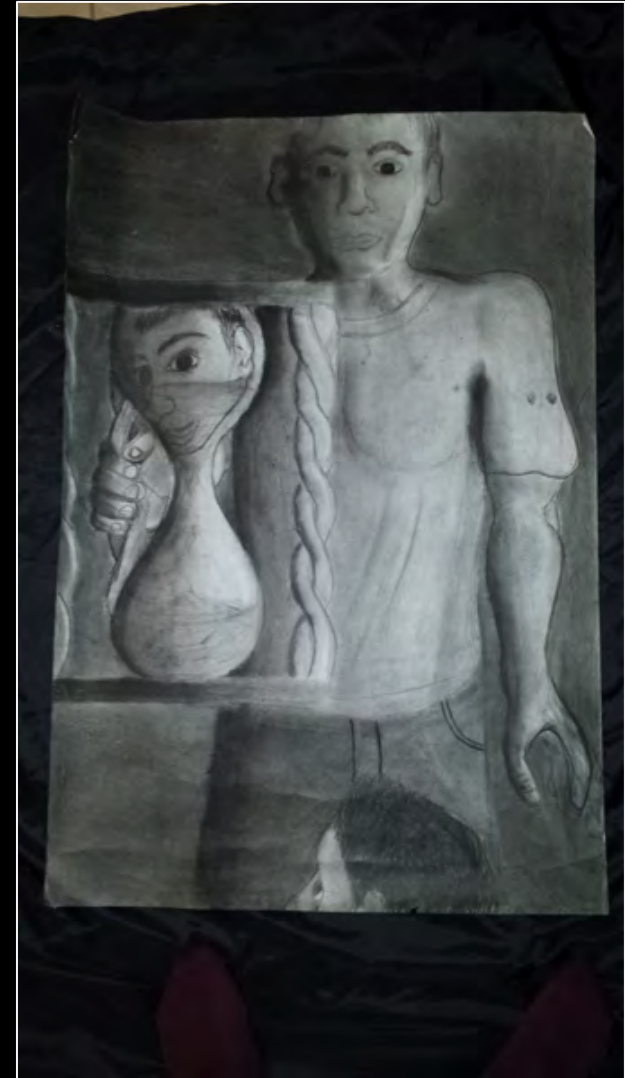
BE GENTLE
a little goes
a long way

crop



BE GENTLE
a little goes
a long way

crop
repair flaws



BE GENTLE

a little goes
a long way

crop
repair flaws
adjust tonal range & colors



BE GENTLE
a little goes
a long way

crop
repair flaws
adjust tonal range & colors



Nancy Cole



photographing your artwork

getting organized

preparing selected work
photographic environment
basic equipment

taking the shot

camera tips
editing

Any photo
of your work
is better than
no photo
of your work.